

TFL

120V and 120V-277V
LED Strip Linear Fixture



Catalog #		Type
Project		Date
Prepared by		

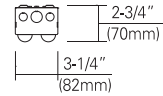
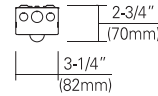
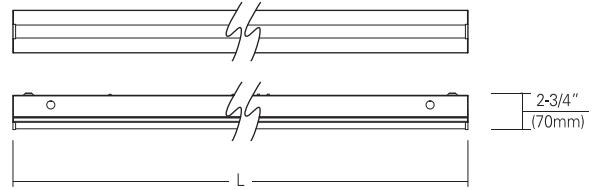
Linear LED



1 Strip



2 Strip



[1 Strip]

[2 Strip]

Dimension Table

Housing	[TFL24-10, 20]	[TFL48-20, 35]
L (Length)	24" (609mm)	48" (1,219mm)

DESCRIPTION

The long-lasting and energy-efficient wraparound type fixture provides a perfect for a variety of residential and commercial surface mounted application. Offering 2ft and 4ft and most commercial features such as universal voltage, 0-10V dimming, and quick surface and suspension mount. Suitable for the offices, schools, stairways, retail or other light commercial places.

SPECIFICATION

HOUSING	TFL24-10	TFL24-20	TFL48-20	TFL48-35
Wattage (Typ)	10W	20W	20W	35W
Lumen (Typ)	1,050(80CRI)	2,100(80CRI)	2,100(80CRI)	3,675(80CRI)
Efficacy (LPW)	105 lm/W	105 lm/W	105 lm/W	105 lm/W
CRI (Typical)	80, 90			
Color (+/-5%)	2700K, 3000K, 3500K, 4000K, 5000K			
Dimming	Triac or 0-10V (Consult with factory for approved dimmers)			

FEATURES and FUNCTIONS

- Formed steel housing and endcap in white coated.
- Lens is made from impact-resistant polycarbonate and patterned design providing uniform coverage.
- Driver and internal components are accessible from below the ceiling.
- Endcaps come with 7/8" diameter knockout for conduit entry.
- LED module - Lumen maintenance of L82 at 50,000 life, and available in all CCTs with a CRI ≥ 80.
- Isolated UL Listed/Recognized LED driver with dimming to 10%, minimum.
- Optional - available in emergency battery backup.

Listing

- CSA-us Certificated
- State of California Title 24
- Energy star Approved & Listed
- Damp location

Warranty

- 5years of lamp life.

ORDERING INFORMATION

Housing	CRI	CCT	Driver	Finish	Options
TFL24-10 24", 10W (1 Strip)	8 80	27 2700K	UTD 120V, Triac Dimming (Standard)	WH White	EMBB Emergency Battery Backup
TFL24-20 24", 20W (2 Strip)	9 90	30 3000K			
TFL48-20 48", 20W (1 Strip)		35 3500K	UZTD 120~277V, 0~10V Dimming		
TFL48-35 48", 35W (2 Strip)		40 4000K 50 5000K			

Example : TFL48-35-840-UTD-WH

- - -